



G R O U P

sbs smart frame
sbs smart hob.
sbs ultra frame™

-  Pre-Fabricated Top Level Wall and Roof Truss Framing
-  Pre-Fabricated Balustrade Framing
-  Pre-Fabricated Facade and External Framing
-  Pre-Fabricated Bulkhead and Internal Framing
-  Pre-Fabricated Wall Framing
-  Architectural Aluminium Framing
-  Complex Architectural Framing
-  Smart Hob Formwork Framing

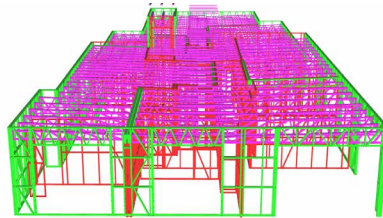
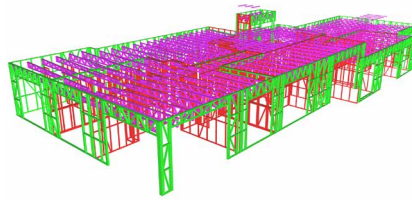
WORKS IN PROGRESS

- 339 St Helena Rd, St Helena
- 61 & 63 Lansell Rd, Toorak
- Brandon Park Offices

PROJECT REPORT

APRIL 2018

Project / Balwyn T Apartments
Builder / Orange Building Solutions



When presented with the option of using either timber or steel for the top level of the apartment project, the builder chose the smarter alternative: light gauge steel.

Using a pre-fabricated LGS solution, a lot of the initial design ground work was completed before the frames arrived on site. Installation was therefore streamlined and quick with positive flow-on effects to the following trades.

Full shop detailing, engineering and framing layouts were combined with 3D virtual reality modelling and shop drawings, coordinated by the SBS Group team. Once drawings were approved and signed off by the builder, manufacture commenced in a quality controlled factory environment.

Frames arrived in scheduled deliveries to site. The lightweight yet high strength material meant frames could be easily installed by hand.

Another key advantage of using a pre-fabricated steel system over against timber is steel does not warp, twist, split, crack or shrink. Frames remain straight and true and once erected, no further straightening or packing out is required, saving on any future maintenance issues.

SBS Group...smarter, straighter and simplified steel framing solutions.





As part of Melbourne Airport's Duty Free upgrade, vibrant and inspiring ceiling features were architecturally designed – adding to the long-legacy of the international terminal.

With a long history in manufacturing iconic and distinctive ceilings, SBS Group was awarded the contract to pre-fabricate a mixture of diverse bulkhead shapes.

Using light gauge steel, the frames were manufactured in sections to tight tolerances. With bulkheads arriving to site ready for immediate

installation, the whole process was an easier, faster and more accurate alternative to a stick build method.

The frames were custom designed to be suspended from droppers and fabricated to enable the direct fix of plaster or MDF linings. Integration of other services contributed towards time and cost saving benefits for the plastering contractor.

SBS Group...why build on site when you can build easier and smarter off site?

