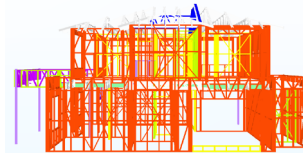
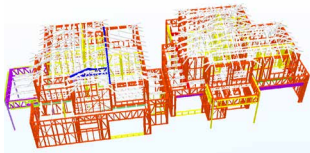
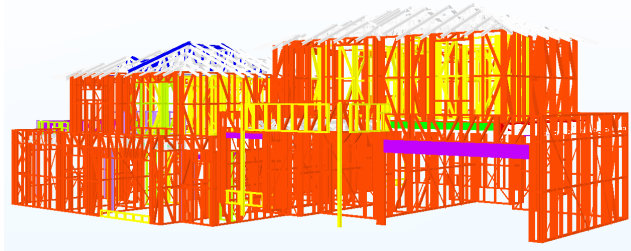


PROJECT REPORT

AUGUST 2018



Malvina Street Townhouses

BUILDER / Rays Enterprises

ARCHITECT / Design CAD Service

LOCATION / 6 Malvina Street,
Burwood (VIC)

**TOTAL L/M OF STEEL FRAME
SUPPLIED** / 7403

**TOTAL M² OF SBS GROUP
FOOTPRINT AREA** / 466.48

FLOOR COUNT / 2

KEY BENEFITS OF USING AN SBS GROUP LIGHT GAUGE STEEL FRAMING SYSTEM /

- In the builder's own words:
*"A controlled prefab system;
quick, strong, easy fixing and
accurate with straight, plumb
and level walls."*
- To speed up the project
schedule, light gauge steel
framing was identified as the
fastest system to install.
- Wall, joist and roof truss frames
were easily fixed off using
supplied layouts. Avoiding an
on site stick building approach
reduces labour costs.
- Frames were fabricated using
Bluescope's TRUECORE® steel
for lightweight, yet strong,
consistent and true results - no
further straightening of walls
once installed.