

OCTOBER 2018

Highton Primary School

BUILDER / Prebuilt Pty Ltd

ARCHITECT / Brand Architects

LOCATION / 218 Roslyn Rd, Highton (VIC)

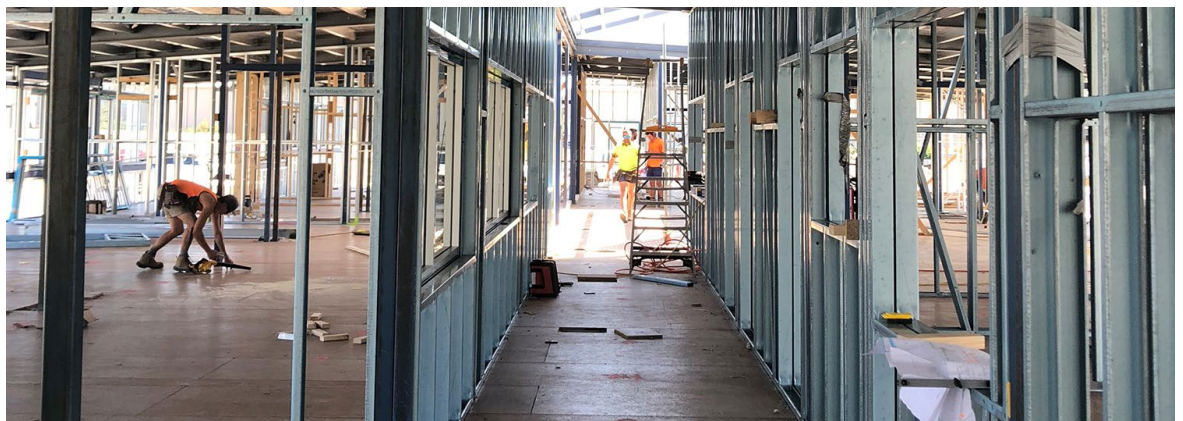
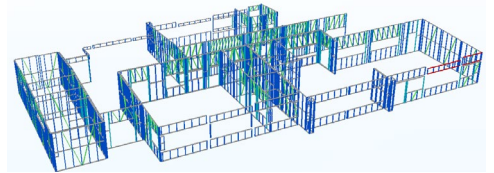
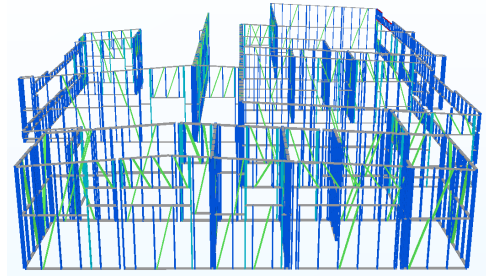
TOTAL L/M OF STEEL FRAME SUPPLIED /
3640.8

TOTAL M² OF SBS GROUP FOOTPRINT AREA /
1142.58

FLOOR COUNT / 1

KEY BENEFITS OF USING AN SBS GROUP LIGHT GAUGE STEEL FRAMING SYSTEM /

- The SBS Group team designed, detailed, fabricated and delivered infill wall frames for the new modular building.
- Framing was manufactured to precise measurements in coordination with the building structure.
- Installation was fast and easy as frames using steel materials do not bow, twist or warp.
- Compared to the cost of conventionally stick building the walls, the prefab system was a more competitive and productive alternative.



PRE-FABRICATED LIGHT GAUGE STEEL FRAMING SOLUTIONS

T: 1300 782 950 / **W:** sbsgroup.com.au / **E:** sales@sbsgroup.com.au