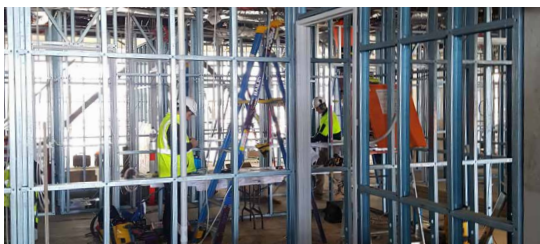
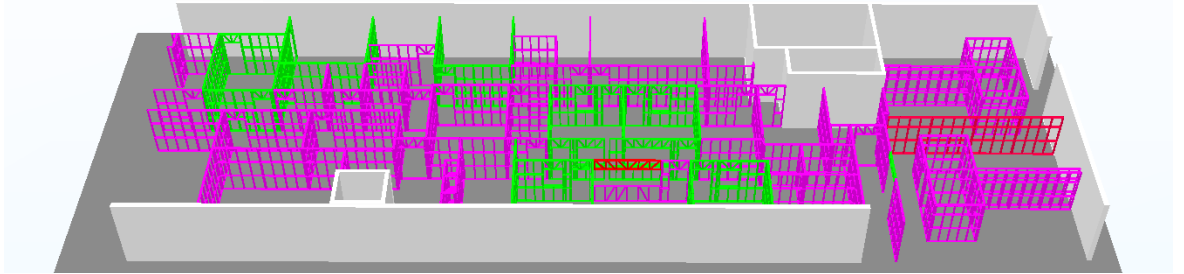


SEPTEMBER 2018



Avalon Airport International Terminal

BUILDER / Qanstruct Pty Ltd

ARCHITECT / Design Phase Victoria

LOCATION / 80 Beach Rd, Lara (VIC)

TOTAL L/M OF STEEL FRAME SUPPLIED / 4321.84

TOTAL M2 OF SBS GROUP FOOTPRINT AREA / 940.22

FLOOR COUNT / 1

KEY BENEFITS OF USING AN SBS GROUP LIGHT GAUGE STEEL FRAMING SYSTEM /

- When the goal is to speed up construction, pre-fabrication is the answer.
- Internal wall framing was designed, shop detailed, manufactured and delivered to site in coordination with the contractor's schedule.
- The ease and speed of install saved the construction teams a week of labour on site.
- Framing was fabricated using Bluescope TRUECORE® steel for strong, straight and true results.

PRE-FABRICATED LIGHT GAUGE STEEL FRAMING SOLUTIONS