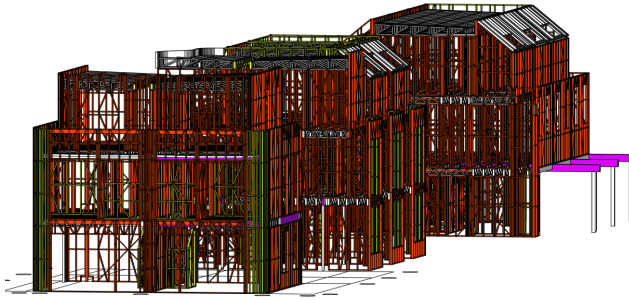


NOVEMBER 2018



Pine Ave Townhouses

BUILDER / Coben Constructions

ARCHITECT / Cera Stribley

LOCATION / 31 Pine Avenue,
Elwood (VIC)

**TOTAL L/M OF STEEL FRAME
SUPPLIED** / 19,769.39

**TOTAL M² OF SBS GROUP
FOOTPRINT AREA** / 1007.73

FLOOR COUNT / 3

THE PROJECT CHALLENGE /

- Build a three-storey townhouse development from the ground up, comply with the design criteria while using minimal structural steel and deliver on time and on budget.

THE SBS STEEL SOLUTION /

- Over 80% of the original structural steel was removed through smarts within the SBS Group design.
- The ability to provide a complete framing package with full detailing and engineering ensured no gaps in the design process. The townhouses were individually braced to achieve the required fire rating and curved walls integrated to support floor joists.
- Straight, true and accurate frames were made from lightweight TRUECORE® steel for a fast and easy install.