

DECEMBER 2018

Knoxia Apartments

BUILDER / L U Simon Builders

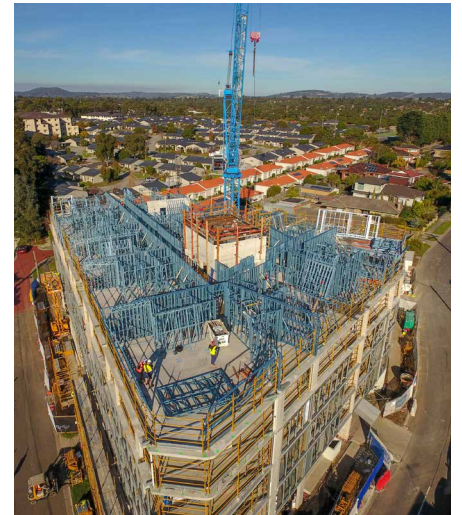
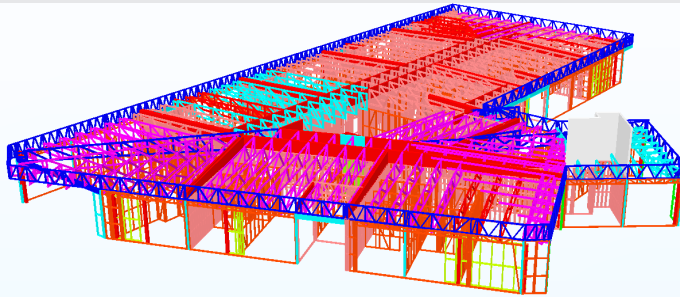
ARCHITECT / iWolff Pty Ltd

LOCATION / 456 Burwood Hwy, Wantirna South (VIC)

TOTAL L/M OF STEEL FRAME SUPPLIED / 21629.23

TOTAL M² OF SBS GROUP FOOTPRINT AREA /
1118.25

FLOOR COUNT / 6



THE PROJECT CHALLENGE /

- Deliver an easy to install load-bearing structure including many smaller bathroom walls for the top level.

THE SBS STEEL SOLUTION /

- The lightweight steel framing package was fully designed, engineered and certified as a completed braced structure for quick and efficient erection.
- The original system was redesigned to replace significant structural steel, combining three separate timber, carpentry and structural steel trades into one smart value managed solution.
- Frames were manufactured using TRUECORE® light gauge steel for easy on site handling and installation.

