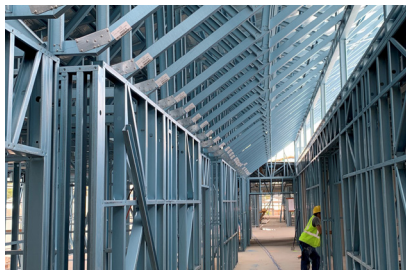
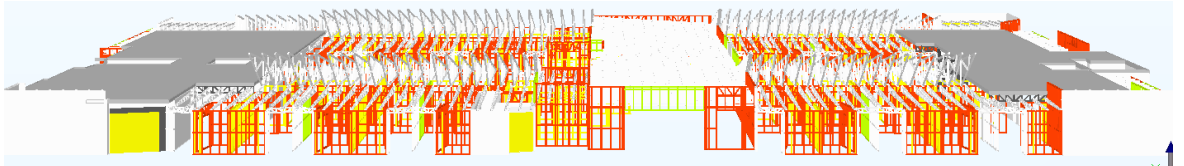


DECEMBER 2019



Allanvale Nursing Home - Stage 1

BUILDER / Equisent Constructions

ARCHITECT / Thexton Smith

LOCATION / 38-40 Ascot Street South, Altona Meadows

TOTAL L/M OF STEEL FRAME SUPPLIED / 30,000+

TOTAL M² OF SBS GROUP FOOTPRINT AREA / 1300

FLOOR COUNT / 3

THE PROJECT CHALLENGE /

A smarter building solution was required to achieve the large spans and irregular shaped trusses while accommodating the short erection times throughout the staged build.

THE SBS STEEL SOLUTION /

- Using a fully engineered lightweight alternative resulted in the elimination of significant heavy and costly structural steel.
- Detailing and certifying the trusses to withstand the wind load and plant platform sitting on top of the lightweight frames, along with the load allowance of the hoists hanging below was a challenge yet made achievable using a combination of design smarts.
- Early submission of full shop drawings and the ability to view 3D modelling throughout the build proved beneficial for the site and project teams.
- With no need to straighten frames once installed, the steel solution was a faster install option than a traditional timber build.

PRE-FABRICATED LIGHT GAUGE STEEL FRAMING SOLUTIONS