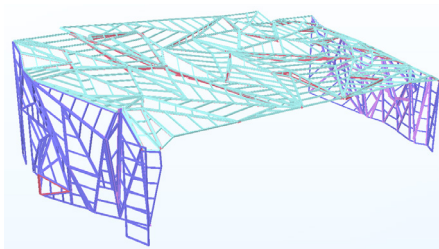
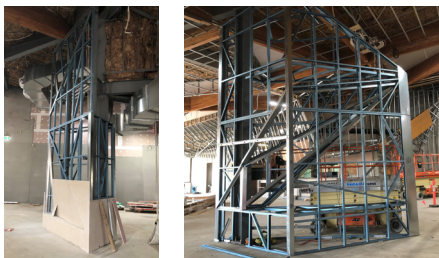
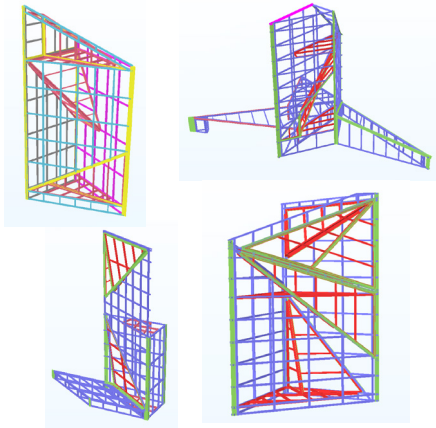


JANUARY 2020



Penguin Parade Visitor Centre

BUILDER / Kane Constructions

ARCHITECT / Terroir

LOCATION / 1019 Ventnor Rd, Summerlands - Phillip Island

TOTAL L/M OF STEEL FRAME SUPPLIED / 2,897

THE PROJECT CHALLENGE /

A simple, fast and accurate solution was required to achieve the unique yet challenging 3D architectural features, while adhering to the tight construction program.

THE SBS STEEL SOLUTION /

- As speed and accuracy were key to the success of the project, customised pre-fabricated solutions were adopted, decreasing labour and time spent on site compared to a traditional stick build method.
- Frames were detailed in-house and fabricated to mm tight tolerances, allowing linings to be directly fixed to the framing members and at the valleys and points. SBS Group's 3D model enabled the contractor the ease of installation of the irregular frames.
- Frames were manufactured from high strength yet lightweight steel for easier handling, less risk and exposure on site without comprising on structural integrity.
- Set-out plans were supplied, allowing the modules to be installed in the exact positions once on site.



PRE-FABRICATED LIGHT GAUGE STEEL FRAMING SOLUTIONS