

Epping Secondary College Modernisation Project

BUILDER / MISR Engineering & Construction

ARCHITECT / Croiser Scott Architects

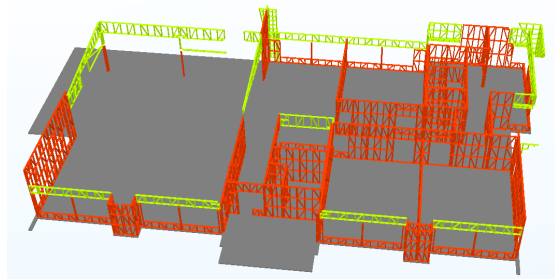
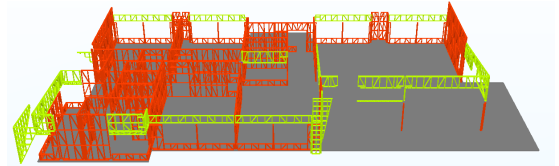
LOCATION / McDonalds Road, Epping

THE PROJECT CHALLENGE /

Partner with the builder to supply a framing system that would require minimal maintenance for the infill walls.

THE SBS STEEL SOLUTION /

- Steel is termite-proof and doesn't twist, warp or shrink over time, resulting in little to no maintenance – which is why it is the preferred material of choice in the educational department.
- The frames were detailed and fabricated here in Australia using TRUECORE® steel. The SBS Group project coordination team worked closely with the builder to ensure a successful install.
- In the words of the builder: *'I believe the quality of the product is what differentiates it from timber. Once shop drawings were approved, the install process was fast compared to timber and very easy.'*
- In the words of the installer: *'Another great project with SBS. Always a pleasure working with someone who delivers such a professional and reliable service. The product is second to none and their carefully considered detailing means the installation process is efficient and hassle free.'*



Images: Bolt Blue Constructions

